

SmartShelter Document Protection

The perfect protection for subscription and confidential information

SmartShelter is perfect for companies that regularly provide their customers with information from a subscription-based business model such as **stock market analyses, tax tips, law journals, service manuals**, etc. In addition this system is suitable for those who want to distribute confidential information only to certain target groups such as mobile employees or authorized customers. Protecting documents with a password is not always as secure as you want.

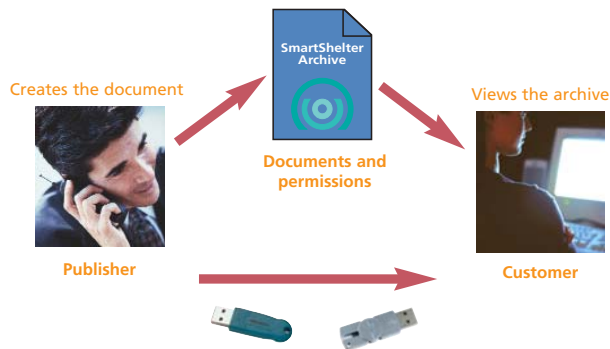
Your goals – our offer

Use SmartShelter if you want

- **Secure** document protection
- **Strong encryption**
- **Easy-To-Use** document protection
- Easy integration for the publisher
- Easy installation for the customer
- **Mobile and offline** content protection
- **Flexible** content protection
- New business models like Pay-Per-Use, Renting, Leasing
- Floating licenses in a network

How to create an archive

SmartShelter stores the encrypted documents in an archive file. With a few clicks the publisher selects the documents he wants to protect and assigns access permissions. After that, the SmartShelter Archive Compiler creates an encrypted archive. Linked documents are automatically detected and integrated.



SmartShelter uses the tokens WIBU-BOX or CM-Stick to make secure archives.

Technical requirements

Operating Systems: Windows 95/98/Me/NT4/2000/XP/Server 2003
Browser: Internet Explorer 4.0 or higher
Hardware: WIBU-BOX, CM-Stick
Supports: ActiveX, DHTML, PDF, Flash, Audio/Video-Formats

How to distribute an archive

- Distributing the archive via:
 - CD-ROM
 - Download via the Internet
 - File transfer
- Easy programming of the hardware token with the customer rights
- Additionally distributing the token

How to view an archive

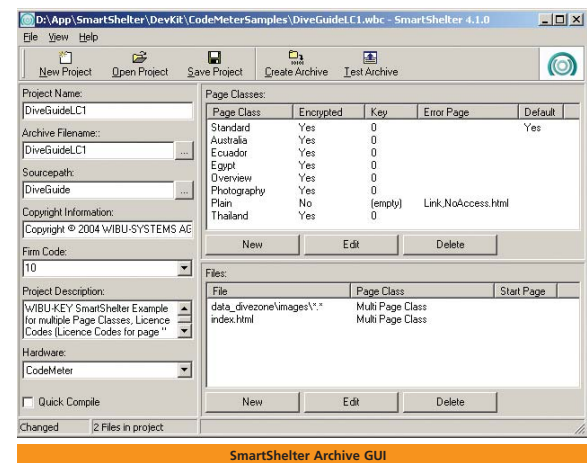
The archive can only be viewed if a token with the corresponding license is present:

- The customer opens a document from the archive
- It is checked, if a hardware token with the fitting and valid key for the documents permission is present
- Decryption of the document "on-the-fly"
- Document will be displayed in an own viewer



Customer

www.wibu.com

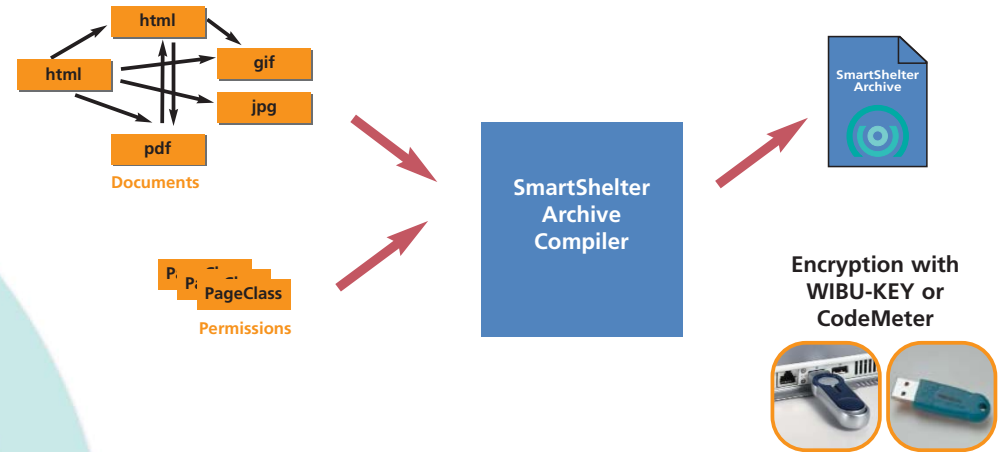


SmartShelter

A smart solution for document protection

How SmartShelter works

SmartShelter analyzes your documents and encrypts them into one single archive file.



SmartShelter Features

- Based on **strong encryption** (AES)
- "On-the-fly" encryption
- Additionally free (plain) data
- Support of different document types:
html, pdf, doc, ppt, xls, avi, mov, gif, jpeg, swf
- One archive for both, different documents and different document types
- Different **permission levels** in one archive
- Supports Windows with IE 4.0 or higher
- **Easy archive creation**
 - Easy to use GUI and helpful wizards
 - Automatic integration of linked documents
- Additional License Code Mode for subscription
- Compressed archive
- Individual error pages or link deactivation
- Supports different hardware token
 - **WIBU-BOX (WIBU-KEY)**
 - **CM-Stick (CodeMeter)**

WIBU
SYSTEMS

The Key is in Your Hands!

WIBU-SYSTEMS AG
Rueppurrer Strasse 52-54 • 76137 Karlsruhe, Germany
Tel.: +49-721-93172-0 • Fax: +49-721-93172-22
Email: info@wibu.com • www.wibu.com

WIBU-SYSTEMS USA, Inc.
1301 First Avenue, #1807 • Seattle, WA 98101, USA
Fax: +1-206-381-9965
Email: info@wibu.com • www.wibu.com

WIBU-SYSTEMS AG (Shanghai) Rep. Office
1505 Liu Lin Tower/1 Huai Hai Zhong Road
RC-200021 Shanghai • Email: info@wibu.com.cn
Tel. +86-21-53067365 • Fax: +86-21-53068749*107